

## April 2020

### Message from our Director General



The global situation with the spread of COVID-19 is evolving rapidly and is a source of great concern to us all. As a key part of the food supply chain, our members are working tirelessly to ensure access to safe, quality and affordable milk and dairy products during this difficult period.

On our [website](#), we have begun to compile information that may be of help to you when dealing with this crisis; further information below. If you have any further resources you think may be useful, please do [share](#) them with us.

In our sector, like all others, the impact of the public health crisis will have far-reaching impacts for the months and perhaps years ahead. While this may mean adaptation, we will not slow down our efforts to deliver on our commitments and support our members, experts and stakeholders. We remain committed to our mission to help nourish the world with safe and Sustainable dairy.

On behalf of IDF, I want to wish you and your families well, and thank you for your continued support and cooperation in these challenging times.

**Caroline Emond**  
**IDF Director General**



## Relying on dairy in a world consumed by COVID-19

"Dairy farmers, processors and all in the dairy supply chain are working tirelessly to ensure enough nutritious dairy foods in these difficult times." [Blog post](#) by IDF President, Dr Judith Bryans



## COVID-19 dairy resources

IDF is compiling a resource with [responses from the global dairy sector to COVID-19](#) and practical support. If you have any examples you would like to contribute, please contact us [here](#)



## Contribution of school milk to the nutrition of children

Providing information on products, implementation and population, and nutritional benefits, IDF's latest bulletin offers new insights into the global impact of school milk. [Download your free copy](#)



## IDF's insight into dairy marketing trends

IDF's [report](#) provides a snapshot of marketing trends, including data on a cross-section of product categories and global insights into technologies and opportunities to 2023. [More info](#)



## Dairy's role in health and sustainable diets

This IDF position papers response to FAO/WHO sustainable healthy diets guiding principles, emphasising the role dairy plays in nourishing a global population in a safe and sustainable way. [Read in full](#)

---



## #EachforEqual

Our interview with Professor Sylvie Turgeon, STELA-INAF, Université Laval who shared her perspective on the presence and influence of women in dairy science, and how the role of women in the sector is evolving. [Read article](#)

---



## Linking food processing to health outcomes

IDF is concerned by the efforts of some policymakers to provide dietary guidance by ranking foods by degree of processing, by using the NOVA system. IDF's position paper outlines why this is a simplistic and dangerous approach. [Read](#)

---



## Developing sustainability

Hear IDF Scientific Programme Manager Dr María Sánchez Mainar in an online event on how to create dairy products that are more sustainable. [Listen](#)





LIVESTOCK ENVIRONMENTAL ASSESSMENT AND  
PERFORMANCE PARTNERSHIP

## Use of LEAP guidelines by the dairy sector

The LEAP Secretariat and IDF would like an overview of the use of LEAP guidelines by the dairy sector. The final goal is to get feedback from those who have implemented the LEAP guidelines (national organizations, at producer level, etc.) on their assessments. Does **your organization or country perform assessments based on these guidelines**? If you can help, please contact [msanchezmainer@fil-idf.org](mailto:msanchezmainer@fil-idf.org)

## IDF Events



IDF INTERNATIONAL  
Cheese Science and  
Technology Symposium



June 1 to 5,  
2020



June 1 to 5, 2020 Château Frontenac | Québec | Canada

An original edition for  
the whole dairy industry,  
provincial, national  
and international

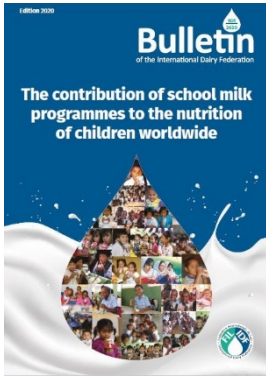


### POSTPONED:

## IDF International Cheese and Technology Symposium

Considering the exceptional situation related to the COVID-19 pandemic, the organizers of the IDF International Cheese Science and Technology Symposium have decided to postpone the event to ensure health and security of participants, speakers and staff. For more information go to the [Symposium website](#)

# IDF Publications



## [Bulletin of the IDF N° 505/2020: Contribution of school milk programmes to the nutrition of children worldwide – Edition 2020](#)

The new edition also includes a review on the evidence of the nutritional benefits of these programmes, offering new insights into the global impact of SMP.



## [Bulletin of the IDF N° 504/2020: New applications of MIR spectrometry: Quality Assurance practices with new parameters in raw milk analysis](#)

This document focuses on the required checks with the implementation of new quantitative applications and how the quality assurance of the results can be assured, along with an exploration of new approaches



## [Bulletin of the IDF N° 503/ 2020: Global Marketing Trends: Understanding changes in dairy consumption around the world](#)

For a limited time only, IDF is offering a discount if the report is purchased before May 26th and alongside the latest edition of IDF World Dairy Situation Report.



## [Joint Standard ISO 23291 | IDF 248: 2020 – Milk and milk products — Guidelines for the application of in-line and on-line infrared spectrometry](#)

This document gives guidelines for using infrared spectrometry in in-line and on-line applications for dairy processing. These applications are distinct to those covered in ISO 21543 | IDF 201.



[Joint Standard ISO 23293 | IDF 247:2020 – Milk-based infant formula powders — Quantification of whey protein content by sodium dodecyl sulfate-capillary gel electrophoresis \(SDS-CGE\)](#)

This document specifies a method for the determination of the whey to casein protein ratio, ranging from 20:80 to 80:20 in cow milk-based infant formula powders.



*Copyright © 2020 IDF. All rights reserved.*

**Our mailing address is [communications@fil-idf.org](mailto:communications@fil-idf.org)**